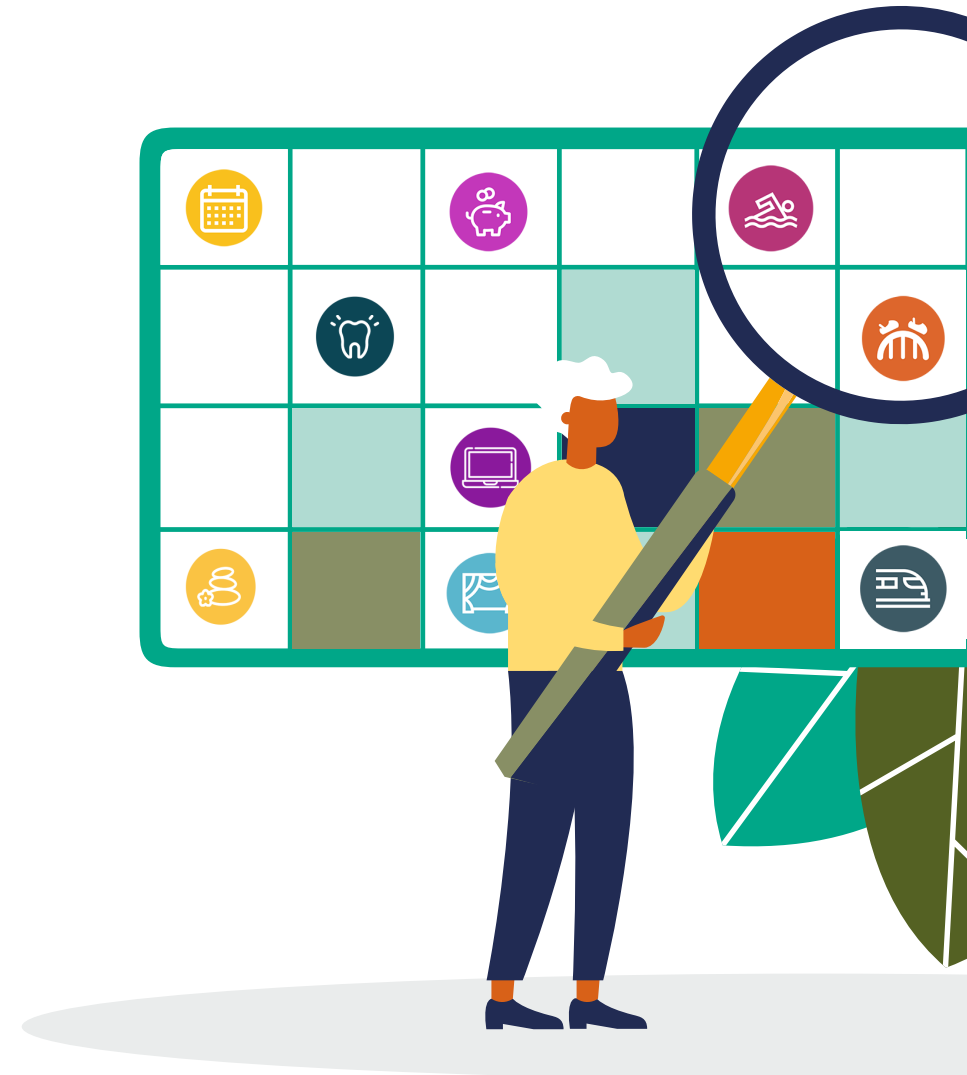


Benefits of Working in Children's Social Care

You are at the heart of everything we do!

Bracknell Forest Council understands that a motivated workforce is the most important factor for it to be successful. It is vital that our employees feel rewarded for their contribution and we'll make sure that you have access to all the training, coaching and development you need to achieve your goals - as you help us achieve ours.

By combining quality training in a supportive local authority with financial incentives, well-being initiatives and flexible benefits, we are sure you will find working in Bracknell Forest the right career choice for you!



Benefits of working in Children's Social Care



Retention payment*	Social Workers/Senior Practitioner (including newly qualified year in post) - £2000 p/a, ATM - £3000 p/a, TM - £4000 p/a, HOS - £5000 p/a	Excellent Pension Scheme	Career average revalued earnings (CARE) pension scheme
Market Premia**	% based on salary. Social Worker - 11.5%, Senior Practitioner - 9%, ATM - 4%, TM - 5.5%	Essential Car User Allowance	£963 per annum
Relocation Package	up to £8,000	Car Parking	Free car park close to the Time Square office
Annual leave	27 days annual leave, plus 5 extra days after 3 years continuous Local Government Service with the option to sell, buy and bank annual leave	Flexible Working	All staff have a laptop and a phone

* Retention payment is paid on successful completion of each year's service and is reviewed, subject to terms and conditions. It is not applicable to staff in the Family Placement team.

** Market Premia is payable as a percentage of your basic salary and is reviewed every two years.

Benefits of working in Children's Social Care



Teams	Zoned staff teams	Harmony Counselling	Counselling service by fully qualified counsellors
Shopping Vouchers	5% off at Sainsbury's	Kaarp Benefits	Money off a range of leisure and entertainment purchases
Leisure Centre Membership	Staff discount on leisure membership	Sports and Social Clubs	A wide variety of events planned each year
Health Screening	A choice of available tests at a small cost to employees, administered by a professional screening provider	Dental Plans	Immediate dental cover arranged by Denplan, The UK's leading dental payment plan specialist

For a full list of staff benefits please visit: <https://www.bracknell-forest.gov.uk/jobs/why-work-bracknell-forest-council/staff-benefits>



Contacts:

For more information on the benefits of working for Bracknell Forest Children's Social Care visit our micro-site <https://www.bracknell-forest.gov.uk/jobs/childrens-social-care-jobs>

Email: Recruitment@bracknell-forest.gov.uk

